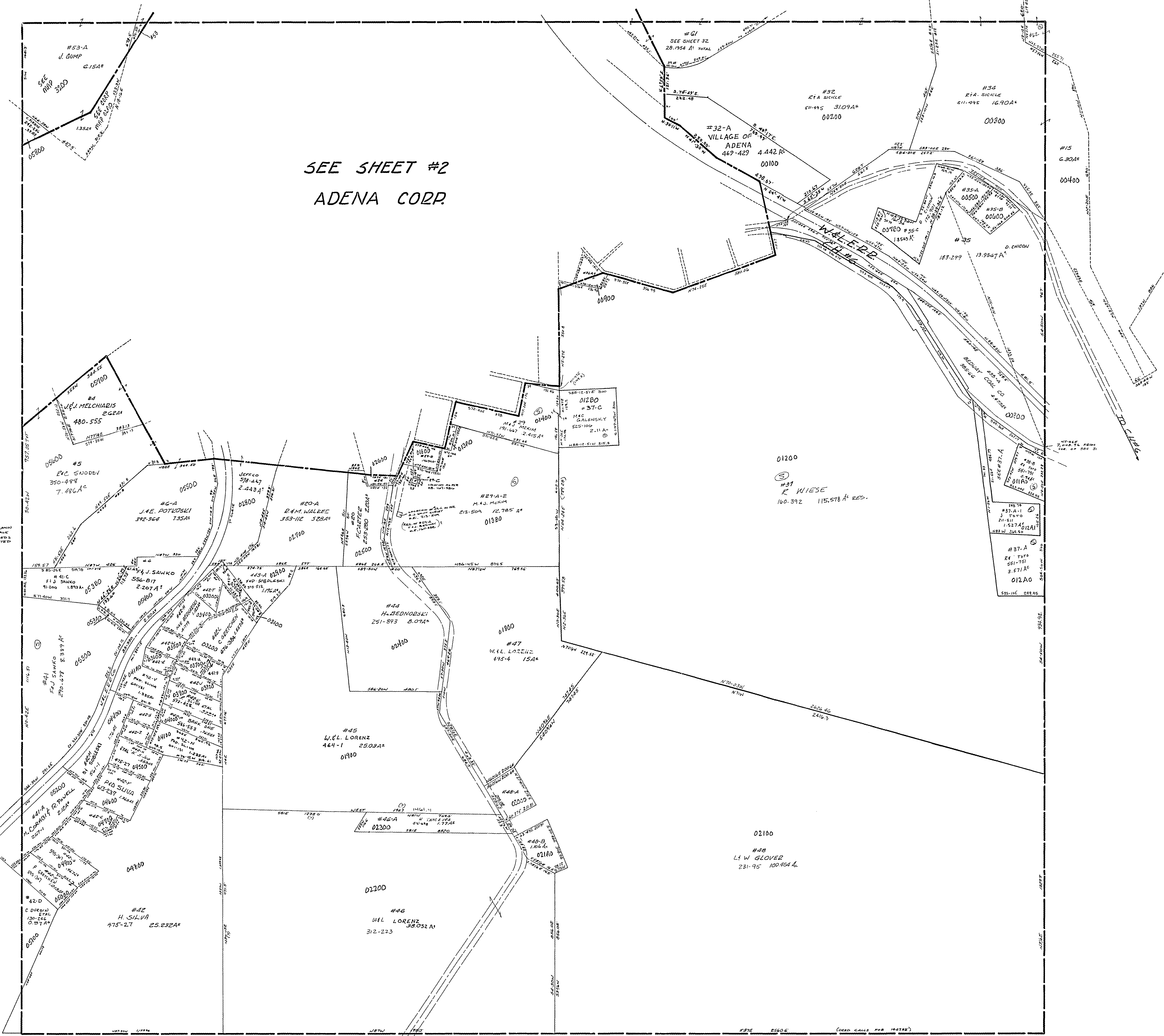


30-3100-

SEE SHEET #2
ADENA CORP.

| | | | |
|-----|-------------------------|---------------|-----------------------|
| #53 | F. CARTER | 401-338 | .18A ² |
| #54 | D. MARTIN | 254-479 | .465A ² |
| #55 | J. MARSHALL | 331-210 | .465A ² |
| #56 | VILL OF ADENA | 117-875(1)-58 | .014A ² |
| #57 | E. STAROSZCZAK | 367-265 | .664A ² |
| #58 | H. CICHON | 384-197 | .756A ² |
| #59 | T. B. REHMAS | 241-187 | .277A ² |
| #60 | K. COLEMAN | 128-717 | .380A ² |
| #61 | " | " | .27A ² |
| #62 | J. M. WITKOP | 420-232 | .53A ² |
| #63 | O. HOLZBEY | 257-250 | .55A ² |
| #64 | P. S. SILVA | 275-102 | .365A ² |
| #65 | P. S. SILVA | 535-102 | .365A ² |
| #66 | R. K. DODSON | 371-67 | .488A ² |
| #67 | J. KUBIANSKI | 578-404 | .475A ² |
| #68 | H. SILVA ET AL | 476-27 | .361A ² |
| #69 | L. K. KUBIANSKI | 481-977 | 1.00A ² |
| #70 | VILLAGE OF ADENA | 532-731 | 1.10A ² |
| #71 | W. L. GOSHER | 91-200 | 0.107A ² |
| #72 | W. C. SCHUCHT | 173-677 | 14.732A ² |
| #73 | G. L. LUKE | 412-512 | .106A ² |
| #74 | ADENA HUNTING & FISHING | 345-741 | 171.381A ² |
| #75 | F. SOBLESKI | 260-572 | .719 A ² |
| #76 | " | " | .292 A ² |



SMITHFIELD TWP.
SEC. 31, T. 8, R. 3.
SCALE: 1" = 200'